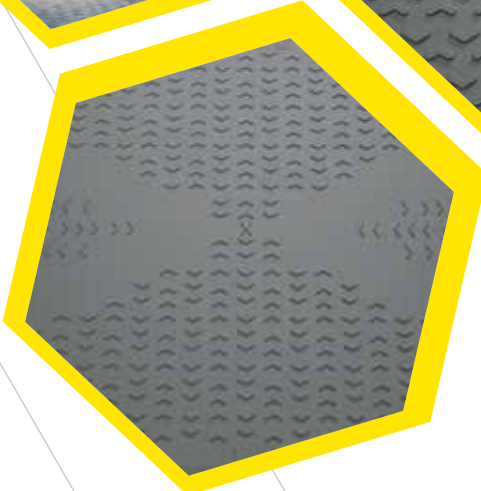
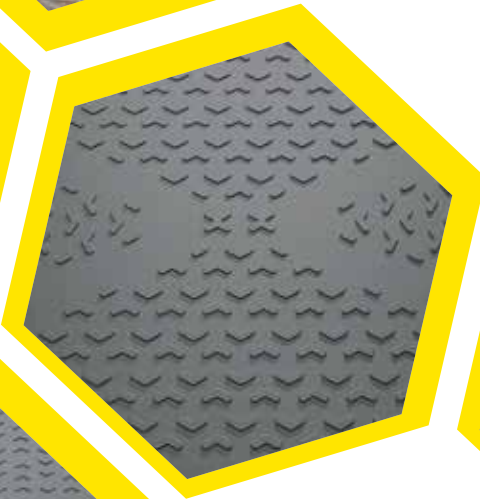


ISOTRACK t MAT

PROTECT – BE SAFE

HEAVY DUTY TEMPORARY ACCESS AND GROUND PROTECTION MAT

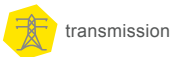
EASY TO INSTALL HEAVY
DUTY ROAD MAT. WIDE
RANGE OF PROJECT
APPLICATIONS. PROVIDES
SAFE, TEMPORARY
ACCESS, WORK AREAS AND
PROTECTION OVER SOFT
GROUND CONDITIONS AND
HARD SURFACES.



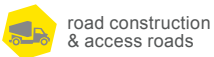
ISOKON
INNOVATIVE PLASTICS SOLUTIONS



windpower construction



transmission



road construction & access roads



walkways



logistics



concerts and events



helipads

SAFETY AND PERFORMANCE

- Prevent vehicles and workers getting bogged down – avoid costs associated with project delays.
- Avoid ground reinstatement costs.
- Cannot puncture and take on water or contaminants.
- Easy to clean after use.

KEY INFORMATION AND FEATURES

- Manufactured to the highest quality standards
- One mat but two different traction surfaces – rugged surface for vehicles with rubber tyres and low profile traction surface for steel tracks and pedestrian use
- Steel reinforced lifting points
- Customer logo option

General information	
Overall Area	3000 x 2000 mm
Height	Total 47,5 mm, Core 38 mm
Useable Surface Area	6 m ²
Weight	235 kg
Colour	Black (standard), other colours optional
Logistic	Open top standard high cube 40' container 50 mats, Truck standard EU 80 mats
Handling	Can use lifting hooks, slings, eye bolts or forklifts, vacuum lifting equipment.
Connection	Using standard M16 bolts with steel or flexible straps. Steel reinforced connection points.
Recycling	100% recyclable
Safety	Raised nub surfaces provide enhanced traction for vehicle safety
Environmental	No liquid absorption and chemically inert. Easy to clean/decontaminate
Load bearing capacity	Vehicle weights up to 150 tonnes*
Fire Rating	UL 94HB

* Load capacity is dependent on ground conditions

APPLICATIONS-MAIN SECTORS

- Construction and civil engineering
- Utilities
- Oil and gas
- Mining
- Transmission
- Drilling contractors
- Events
- Any projects requiring safe temporary access for heavy vehicles and equipment

KEY BENEFITS

- Support vehicle and equipment weights up to 150 tonnes*
- Easy and quick to unload using lifting equipment or forklifts
- Install roadways, working pads, parking and turning areas
- Safe movement and access for vehicles, equipment and people
- Mats gently flex with ground contours – no ground preparation required
- Prevent severe rutting and damage – avoid ground reinstatement costs
- Prevent vehicles and equipment from getting bogged down - keep your project running and avoid delays
- Flexible but tough and durable mat for long life use
- Low theft risk compared to aluminium and steel mats
- 100% recyclable at end of life



ISOKON d.o.o.

proizvodnja in predelava termoplastov, d.o.o.,
Slovenske Konjice
MESTNI TRG 5A
3210 SLOVENSKE KONJICE
SLOVENIJA

T: +386 (0)3 757 11 00
F: +386 (0)3 757 10 63
e-mail: isotrack@isokon.si
www.isotrack.eu
www.isokon.si

- No reproduction of mat photographs, drawings or images is permitted without the prior written approval of Isokon.
- The information contained herein is based on current knowledge and does not guarantee properties or performance of **Isotrack tMat** under all conditions. Refer to Isokon Standard Terms and Conditions.
- The mat is made from material with high compressive strength but the maximum safe vehicle weight will depend on a number of factors including the load bearing capacity of the underlying ground conditions. Advice should be sought from competent project geotechnical engineers.